

Network Barcode Printer
IP Address Setup Brochure

IPSETUP.EXE

V2.07

Operating System: The IP settings program can be executed in Windows 2000/XP/2003.

Protocol: The Ethernet port of the printer supports TCP/IP protocol.

Installation:

- A. **Printer:** First make sure the printer is off, and then connect it to the network through the Ethernet port on the back panel of the printer. The connector type is RJ45.
- B. **Software:** Install the Windows Driver for the printer following the directions in the User's Manual.

Attention:

The default IP address of label printers is 199.9.9.196. If the factory default IP address conflicts with your network, please:

- A. ***Connect only to a computer who's IP doesn't conflict with the printer,***
- B. ***Or change the IP address of the equipment conflicting with the printer.***

Setup Procedures:

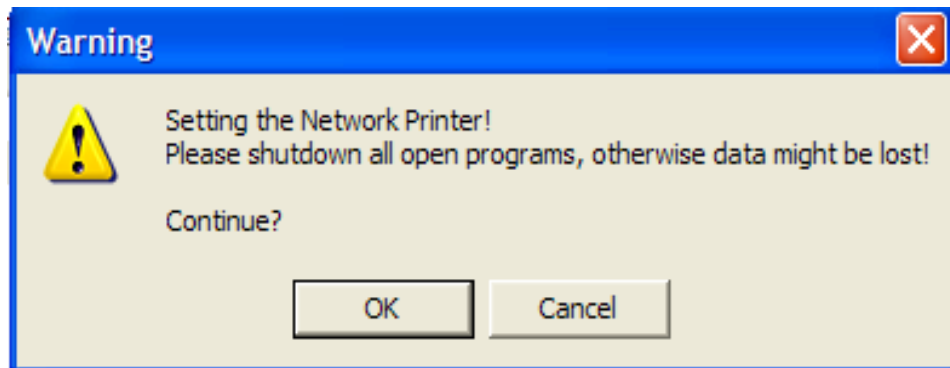
- (1) Please close all the tasks running on the computer;
- (2) Only System Manager can access the network settings.

Step 1: Turn on the printer.

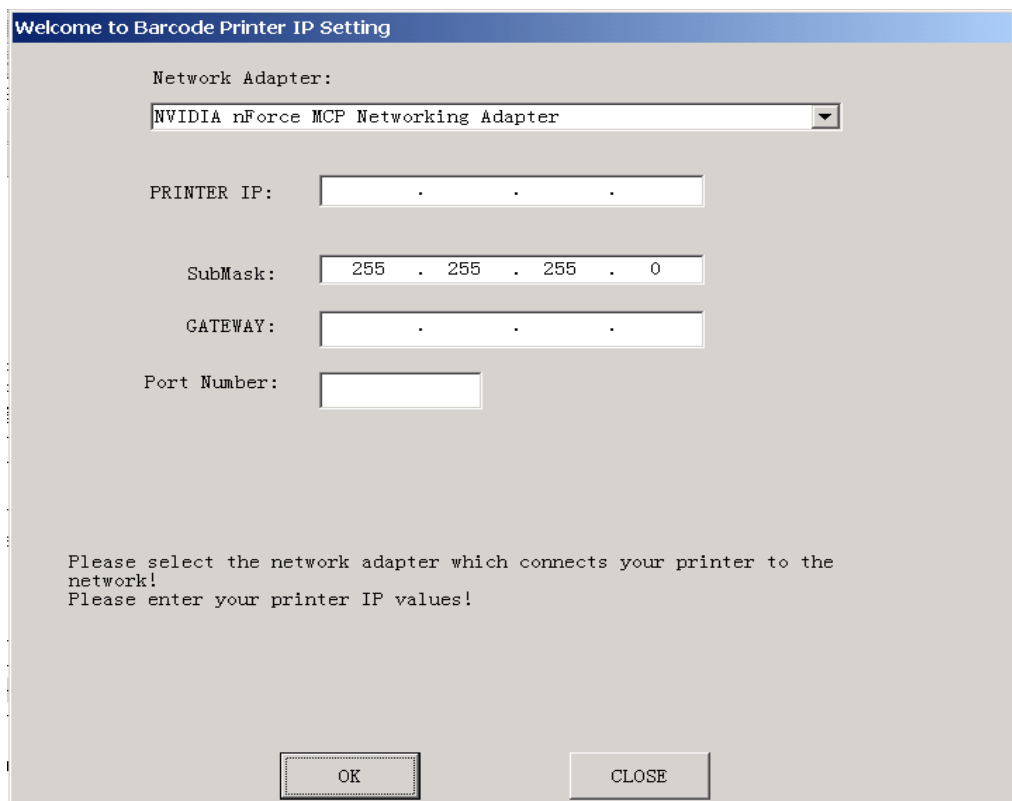
Before turning the printer on, make sure that the DIP bit6 on the back panel of the printer is switched ON.

Step 2: Execute the IP setting program.

Double click the IPSETUP.EXE file. After double clicking, the following window will appear.



After clicking OK, a window similar to the following will appear.



- (a) If there is only one network adapter in your computer, just fill in the values for the IP, SubnetMask and Gateway, and then click OK.
- (b) If there is more than one network adapter in your computer, please select the one which connects your

printer to the network from the menu. Then input the PRINTER IP. See the following two illustrations:

Welcome to Barcode Printer IP Setting

Network Adapter:
NVIDIA nForce MCP Networking Adapter

PRINTER IP: . . .

SubMask: 255 . 255 . 255 . 0

GATEWAY: . . .

Port Number:

Please enter the valid IP address!!

OK CLOSE

Step 3: IP address, SubnetMask and Gateway and Port Number setup.

Please confirm that the IP address, SubnetMask and Gateway and Printerport is correct. (Port Number default value is 9100) .

Then click the OK button.

After clicking on the OK button from the previous window, you will see a dialogue box as follows:

Welcome to Barcode Printer IP Setting

Network Adapter:
NVIDIA nForce MCP Networking Adapter

PRINTER IP: 192 . 168 . 1 . 8

SubMask: 255 . 255 . 255 . 0

GATEWAY: 192 . 168 . 1 . 1

Port Number: 9100

Please enter the valid IP address!!

OK CLOSE

If the following window appears, please check the network connection.

Welcome to Barcode Printer IP Setting

Network Adapter:
NVIDIA nForce MCP Networking Adapter

PRINTER IP: 192 . 168 . 1 . 8

SubMask: 255 . 255 . 255 . 0

GATEWAY: 192 . 168 . 1 . 1

Port Number: 9100

Cannot connect to the Network Printer!
Please check the network connection.
Click CLOSE Button to exit!

OK CLOSE

When Printer IP Setup is completed, the following will appear:

Welcome to Barcode Printer IP Setting

Network Adapter:
NVIDIA nForce MCP Networking Adapter

PRINTER IP: 192 . 168 . 1 . 8

SubMask: 255 . 255 . 255 . 0

GATEWAY: 192 . 168 . 1 . 1

Port Number: 9100

Succeeded in setting the Network Printer IP!
Please turn off the Printer and switch the DIP bit 6 to OFF!
Click CLOSE button to exit!

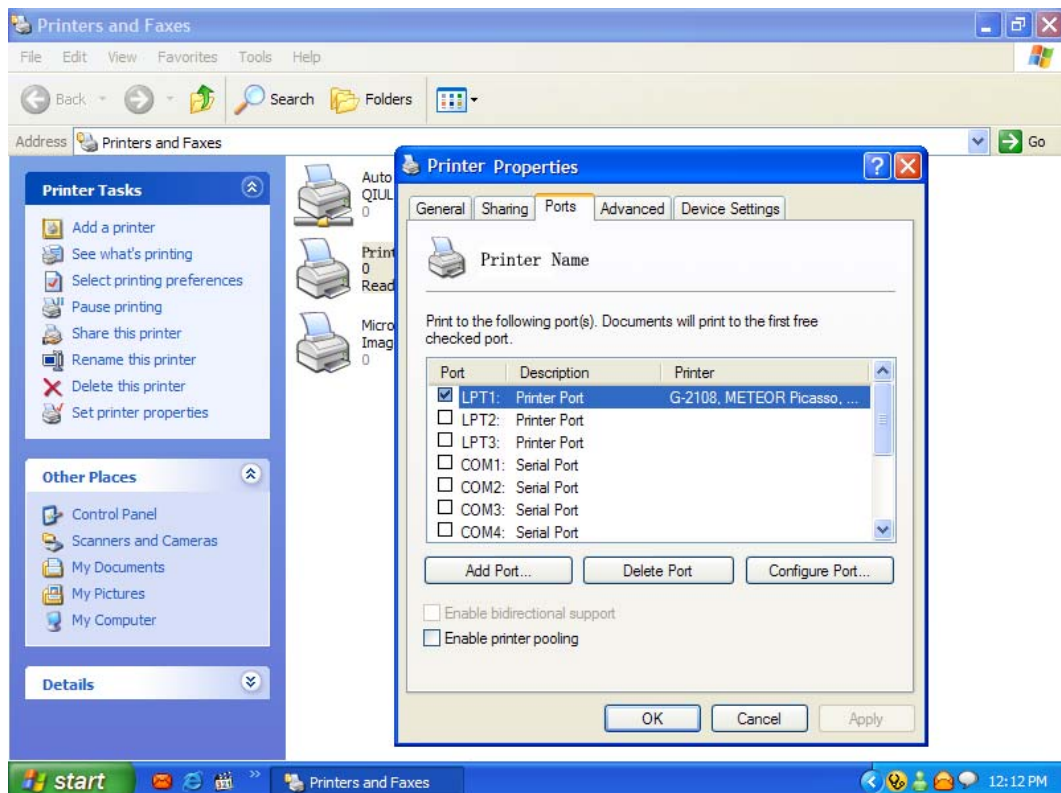
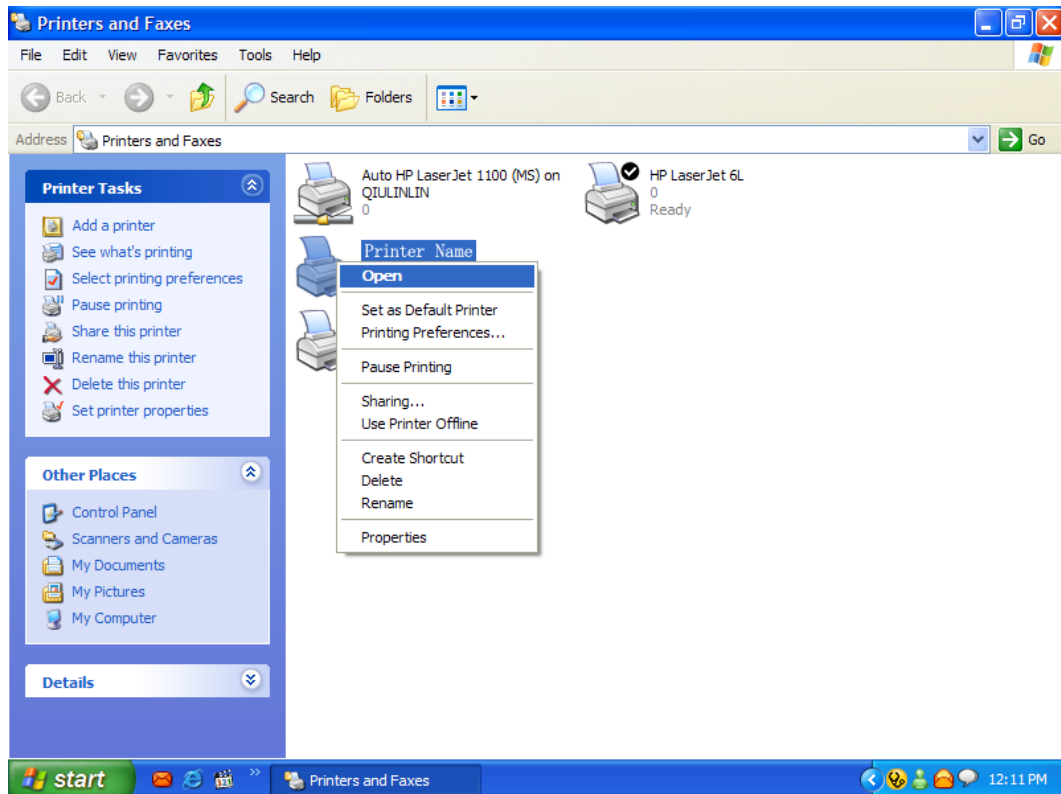
OK CLOSE

The FEED and CANCEL indicators on the front panel of the printer will blink simultaneously after the IP address has been successfully set. Click CLOSE to exit.

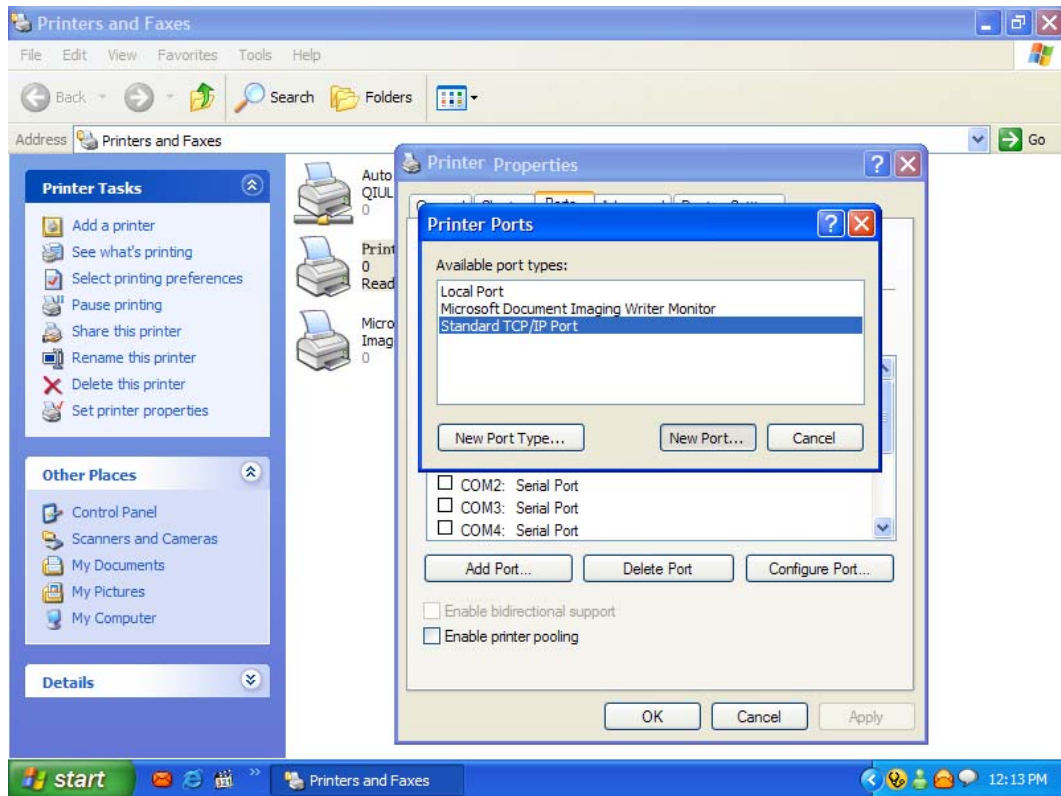
Step 4: Turn off the printer, and then MAKE SURE to switch the DIP bit 6 to OFF.

Step 5: Setting up the network port of the Windows system.

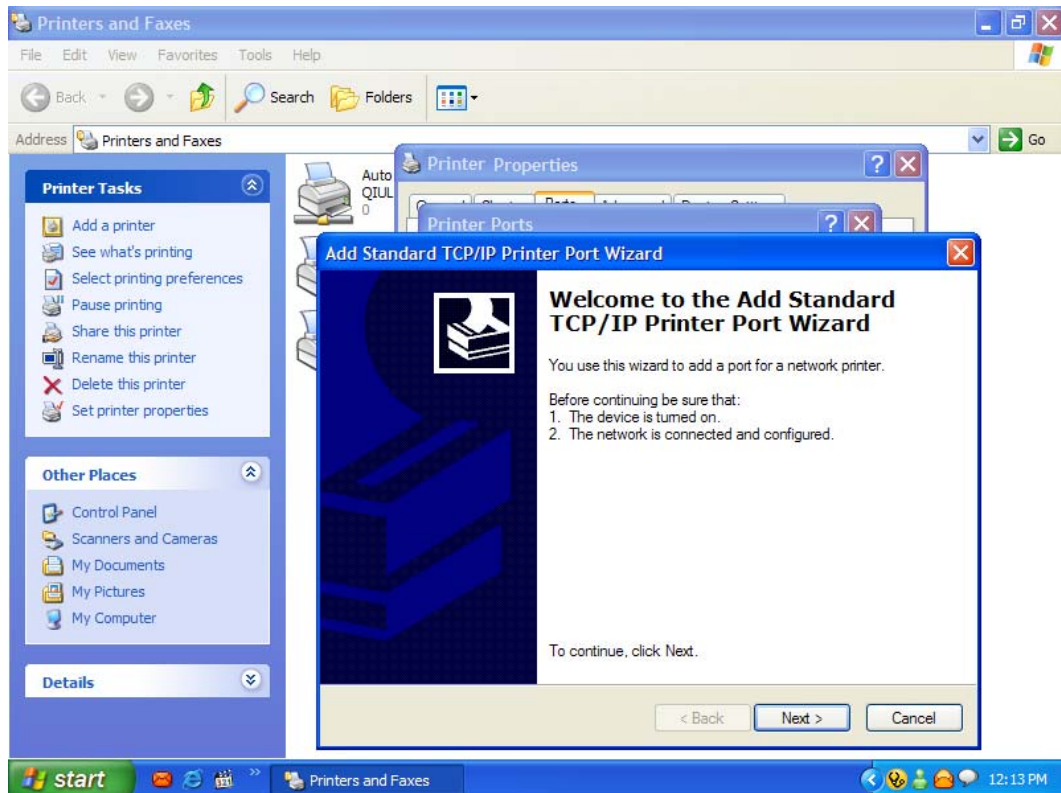
Right click the icon corresponding to the printer, and click on PROPERTIES.



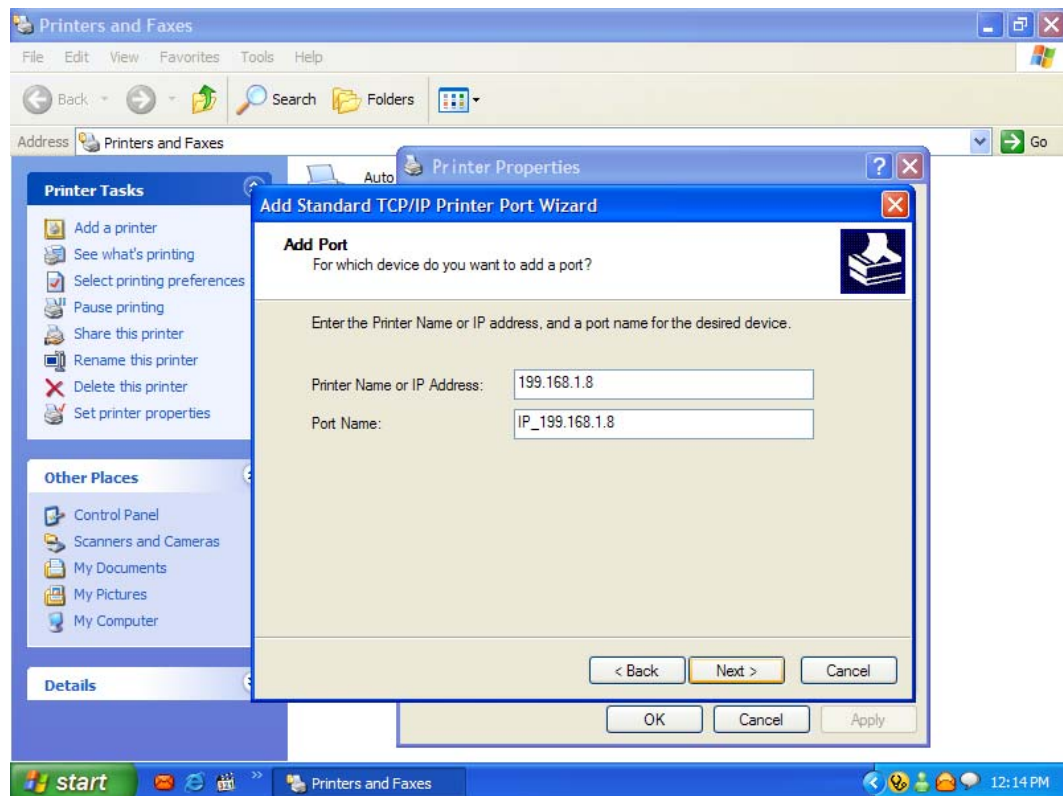
Click Add Port.



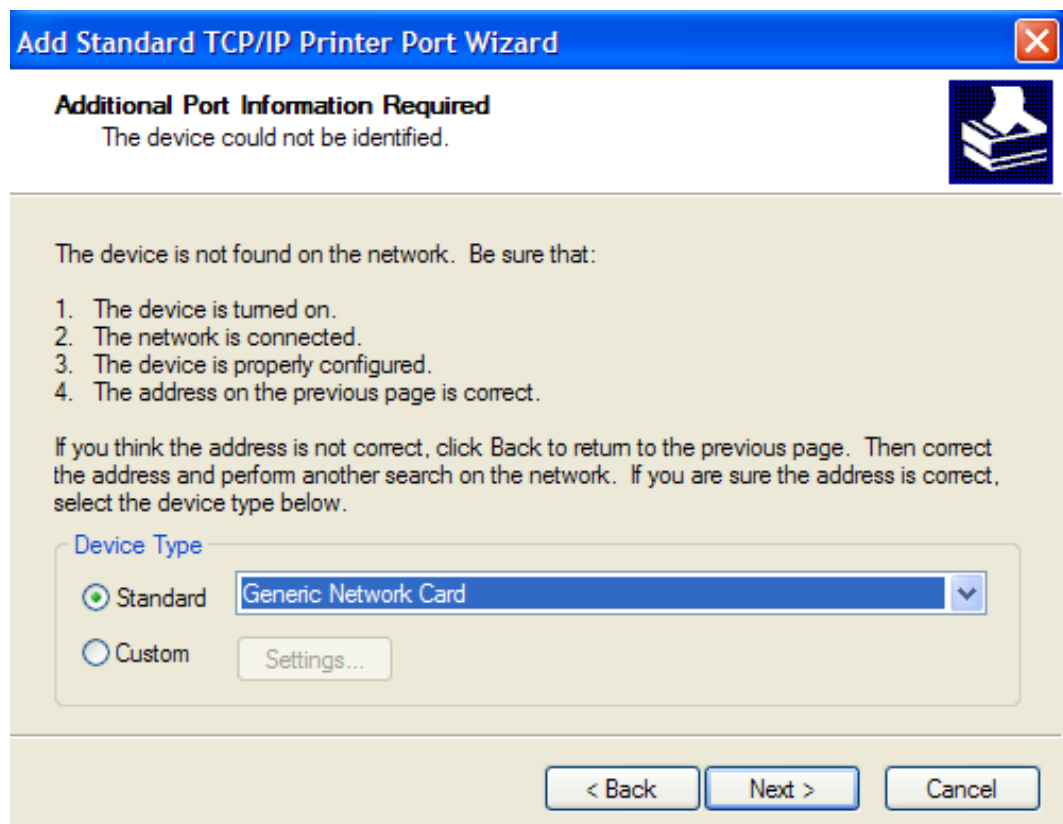
Click New Port Type.



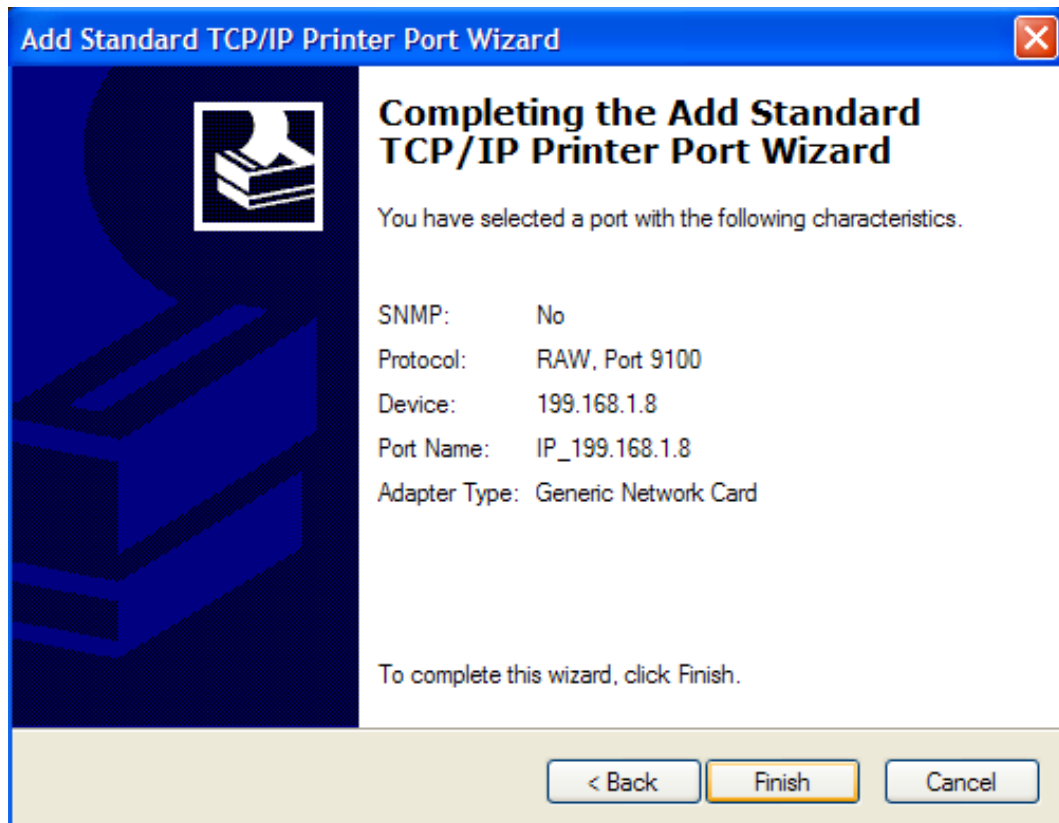
Click Next.



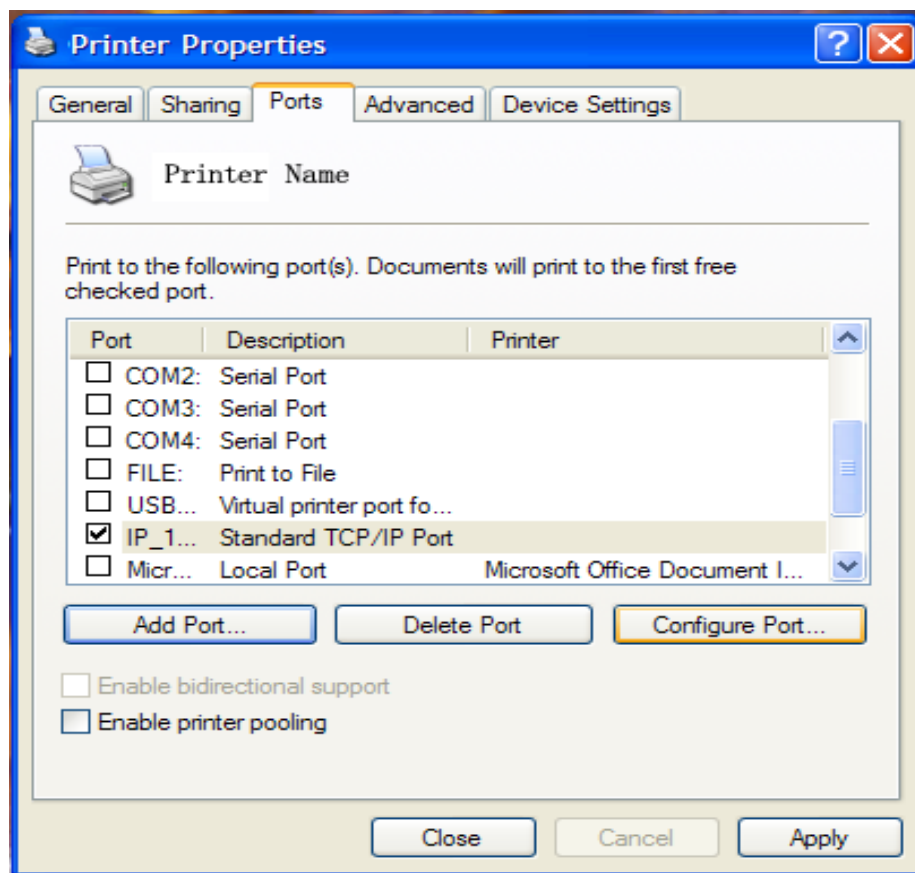
Input the IP address that you inputted for the printer, and click Next.



Choose STANDARD, and then click NEXT.



Click Finish.



Configure Standard TCP/IP Port Monitor

Port Settings

Port Name: IP_199.168.1.8

Printer Name or IP Address: 199.168.1.8

Protocol

☒ Raw ☐ LPR

Raw Settings

Port Number: 9100

LPR Settings

Queue Name:

☐ LPR Byte Counting Enabled

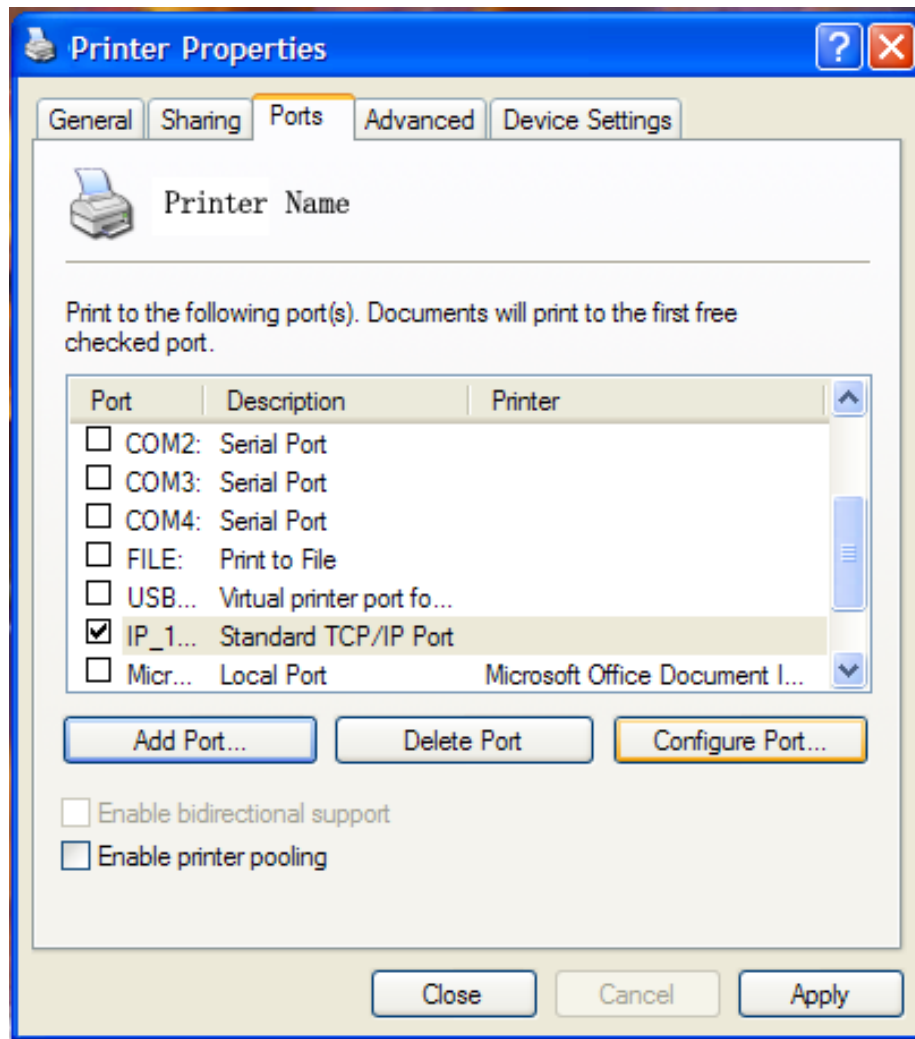
☐ SNMP Status Enabled

Community Name: public

SNMP Device Index: 1

OK Cancel

Port Number: Set the print port number. (Default value is 9100)



Click APPLY, settings are now complete.